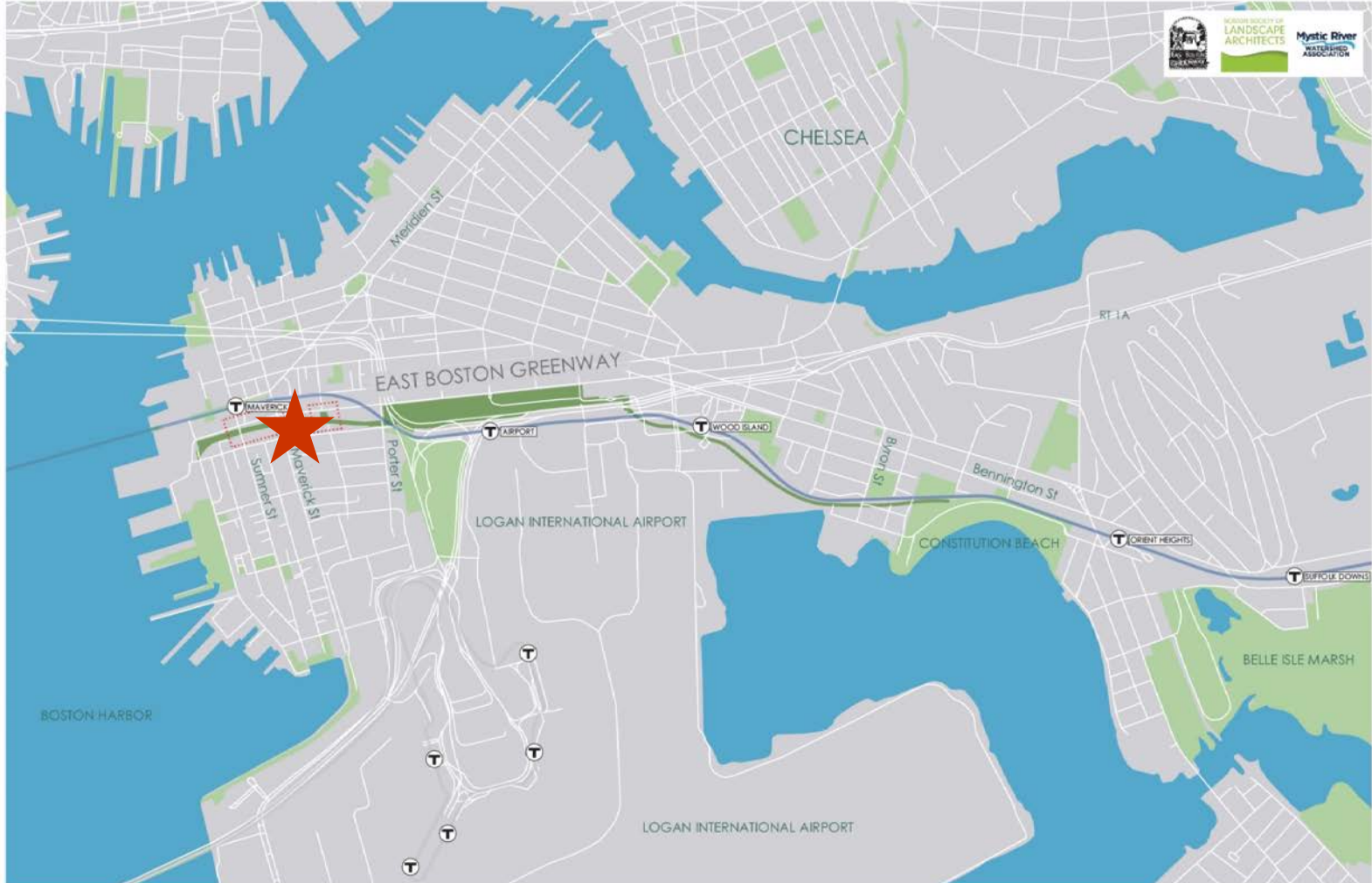


GOVE ST CROSSING: EAST BOSTON



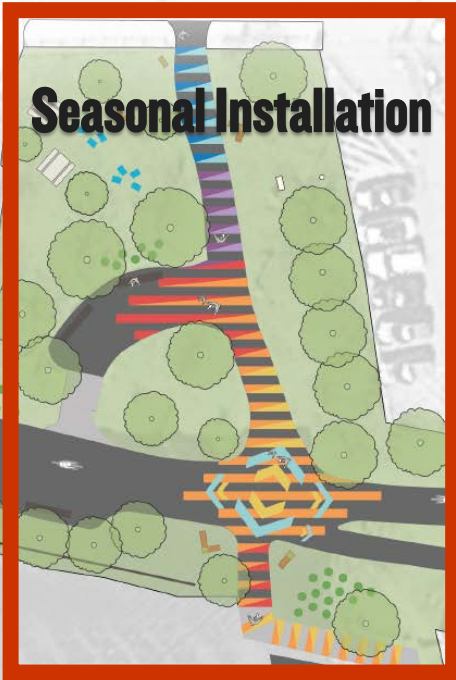
STEPHANIE WEYER

TOOLE DESIGN



Bremen St

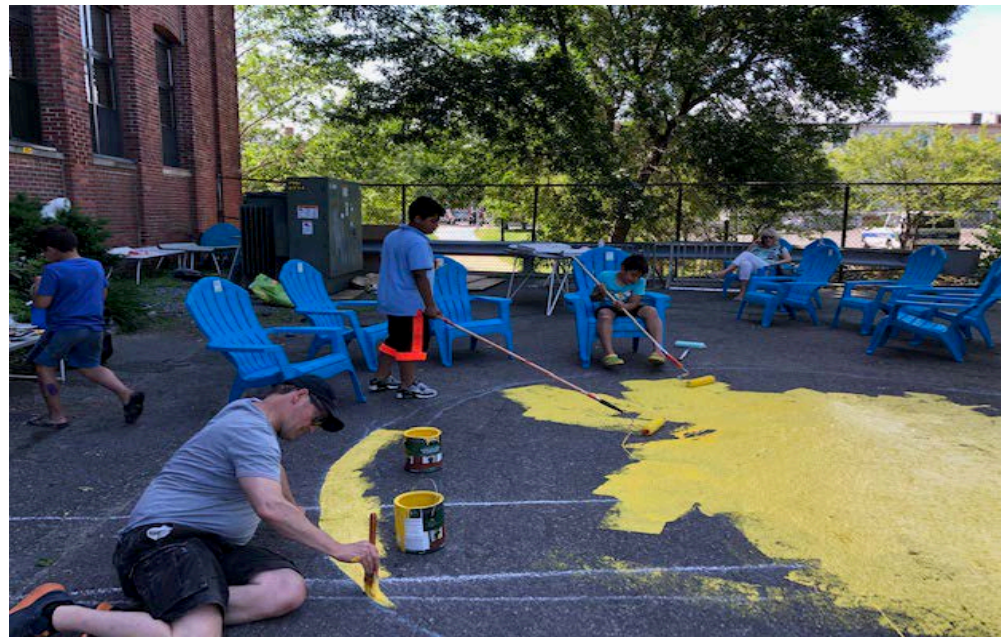
Seasonal Installation



East Boston Greenway (EBG)

Week-Long Pop-Up









Get and more...
Read or play
Enjoy





Project Team

ROLES	ORGANIZATION
City Approvals	Public Realm Director with Boston Department of Transportation (BTD) and Boston Parks Department
Project Leads	Friends of the East Boston Greenway (FoEBG) and the Boston Society of Landscape Architects (BSLA)
Local Business Support	n/a
Landscape Architect	Toole Design
Project Management	Friends of the East Boston Greenway
Volunteers at Pop-Up	Greenway Council, Gove Street Citizen Association, Gumball apartment building residents, kids walking by
Legal / Memorandum of Understanding	n/a
Programming	Artist (Krina Patel) for a piñata party, local musicians (through Zumix), children's games (Civic Space Collaborative)
Maintenance	Resident leaders, Friends of the East Boston Greenway and Park Keeper, The Trustees of Reservations summer youth program

Gove St Process (10 months)

Site Selection

- Friends of the East Boston Greenway (FoEBG) worked to select site during summer engagement on the Greenway
- **Summer / Fall 2018**

Design Challenge

- The BSLA hosted a Design Challenge to collect entries
- 12 jury members reviewed the designs and worked together to select a project
- **Nov. 2018 – March 2019**

Design Process

- Met with Greenway Council and neighborhood associations
- Design session at the library and schools
- **March – May 2019**

City Approvals

- Met with Parks Dept. staff to review almost final design to weigh in
- On-site meeting with Public Realm Director
- Forms: Street closure application, Parks' small project form
- **May 2019**

Two-Day Build Out

- Built benches off-site
- Final site design
- Purchased materials
- **June 2019**

Celebrate

- Piñata Party
- Kids events
- Three music events
- **June 2019**

Gove St Budget

HARD COSTS	Cost	Donated / Borrowed	Funding Source
Materials – New - Pop-up <ul style="list-style-type: none"> • 6 bistro sets (\$1,000 total / \$170 each) • Paint supplies – Behr Concrete paint (\$2,000) • Wood for benches (\$1,400) • Planters, flowers, shrubs (\$2,000) • Signs – Corrugated Plastic (\$260) 	\$6,000		Barr Foundation Grant
Materials – Borrowed - Pop-up <ul style="list-style-type: none"> • Picnic tables, traffic cones, bubbles, tent, etc. 		\$6,000	n/a
TOTAL	\$6,000	\$6,000	

SOFT COSTS	Cost	In-Kind	Funding Source
Programming at the pop-up <ul style="list-style-type: none"> • Musicians (\$1,200 / \$400 each) • Children’s event and piñata party (\$700) 	\$2,100		Barr Foundation Grant
Friends of the East Boston Greenway – Project management, event planning, etc.	\$7,000		Barr Foundation Grant
Boston Society of Landscape Architects	\$5,000	50 hours	Grant + In-kind
Landscape Architects (Toole Design)		500 hours	In-Kind
Volunteer time		120 hours	n/a
TOTAL	\$14,100	670 hours	